

---

**AKSESUARLAR**  
ACCESSORIES

---

**AKSESUARLAR**



**KANADIN AŞAĞIDAKİ ÖZELLİKLERİNE GÖRE VERİLEN TABLOLARDAN ÇİFT AÇILIM SETLERİNİN SEÇİMİ YAPILIR:**  
CHOOSE A T&T KIT FROM GIVEN TABLES AS SPECIFICATIONS OF VENT:

- 1) **KANAT AĞIRLIĞI / WEIGHT OF VENT**
- 2) **KANAT ÖLÇÜLERİ / DIMENSIONS OF VENT**
- 3) **KANADIN AÇILIM ÖNCELİĞİ (ÖNCE NORMAL / ÖNCE VASİSTAS)**  
OPENING PRIORITY OF VENT (FIRST TILT OR FIRST TURN)
- 4) **PVC KANALLILAR İÇİN AÇILIM YÖNÜ (SAĞ / SOL)**  
OPENING SIDE FOR PROFILES WITH PVC GROOVE (RIGHT OR LEFT HAND)

<p><b>KOL</b> CREMONE</p>	<p><b>ANAHTARLI KOL</b> CREMONE WITH KEY</p>	<p><b>MEKANİZMA</b> MECHANISM</p>	<p><b>AKILLI MEKANİZMA</b> LOGICAL MECHANISM</p>
<p><b>MAKAS (80 kg)</b> ARM</p>	<p><b>MAKAS (130 kg)</b> ARM</p>	<p><b>MENTEŞE KİTİ (80 kg)</b> HINGES</p>	<p><b>MENTEŞE SETİ (130 KG)</b> HINGES</p>
<p><b>MENTEŞE KİTİ (170 kg)</b> HINGES AND ARMS KIT</p>	<p><b>İLAVE KİLİTLEME</b> ADDITIONAL FASTENING</p>	<p><b>İLAVE MAKAS</b> ADDITIONAL ARM</p>	

**20 LİK MAKARALI KİLİT**  
LOCK WITH ROLLER



**25 LİK MAKARALI KİLİT**  
LOCK WITH ROLLER



**30 LUK MAKARALI KİLİT**  
LOCK WITH ROLLER



**20 LİK DİLLİ KİLİT**  
LOCK WITH RAIL



**25 LİK DİLLİ KİLİT**  
LOCK WITH RAIL



**30 LUK DİLLİ KİLİT**  
LOCK WITH RAIL



**BAREL (76MM)**  
CYLINDER (76MM)



**BAREL (90MM)**  
CYLINDER (90MM)



**TOPUZLU BAREL (41MM)**  
KNOB CYLINDER (41MM)



**DİLLİ KİLİT KARŞILIĞI**  
STRIKER FOR LOCK WITH RAIL



**MAKARALI KİLİT KARŞILIĞI**  
STRIKER FOR LOCK WITH ROLLER



**KAPI ALTI FIRÇASI**  
BRUSH FOR BOTTOM OF DOORS



**BİNİLİ KAPI MENTEŞE**  
STEP HINGE FOR DOORS



\*BAĞLANTI VİDALARI DAHİLDİR.  
\*FIXING SCREWS ARE INCLUDED.

**HEMYÜZ KAPI MENTEŞE**  
HINGE FOR FLUSH DOORS



\*BAĞLANTI VİDALARI DAHİLDİR.  
\*FIXING SCREWS ARE INCLUDED.

**PENCERE MENTEŞESİ**  
WINDOW HINGE



\*KAPASİTE: 85KG (3AD)  
\*CAPACITY: 85 KG (3 PCS)

**AYARLI KAPI MENTEŞESİ**  
ADJUSTABLE DOOR HINGE



**ALDOKS MENTEŞESİ**  
ALDOKS HINGES



**C 60 MENTEŞESİ**  
C 60 HINGES



**ÇİFT MAÇALI KOL**  
TWO-WAY CREMONE



**TEK MAÇALI KOL**  
ONE-WAY CREMONE



**TEK MAÇALI ANAHTARLI KOL**  
ONE-WAY CREMONE WITH KEY



**ÇİFT MAÇALI ANAHTARLI KOL**  
TWO-WAY CREMONE WITH KEY



**SÖKÜLEBİLİR KOL**  
AWAY CREMONE



**SÖKÜLEBİLİR KOL SAPI**  
PULL HANDLE FOR AWAY CREMONE



**KAPI KOLU**  
DOOR HANDLE



**TEK MAÇALI KOL**  
SINGLE WAY CREMONE



**CLASİK CEPHE KOLU**  
CLASSIC FRONT HANDLE



**SABİT KARŞILIK**  
FIXED STRIKER



**TAHLİYE KAPAĞI**  
DRAINAGE SLOT COVER



**KÖŞE İLETİM PARÇASI**  
CORNER DEVICE



**ÇİFT MAÇALI KOL BAĞLANTILARI**  
TWO-WAY DRIVE ROD COMPONENTS



**KANAT SARKMA TAKOZU**  
CHOCK FOR VENTS



**ÇİFT MAÇALI KOL İLE KİLİTLEME SETİ**  
KIT FOR TWO-WAY SASH CLOSING



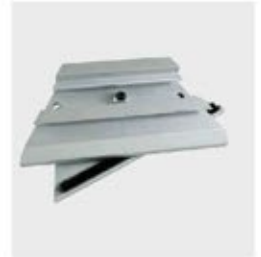
**VASİSTAS MANDALI**  
TWIN CATCH



**VASİSTAS MANDALI**  
TWIN CATCH



**PİVOT MENTEŞE**  
PIVOT HINGE



**KAPI SÜRGÜSÜ**  
DOOR BOLT



**SAVIO KAPI SÜRGÜSÜ**  
SAVIO DOOR SLIDER



**PENCERE SÜRGÜSÜ (140MM)**  
WINDOW BOLT



**FİŞEK SÜRGÜ**  
CARTRIDGE SLIDER



**2.KANAT İÇİN İKİ YÖNLÜ SÜRGÜ SETİ**  
TWO-WAY LEVER BOLT KIT FOR SECONDARY SASH



**ALÜMİNYUM 40 LİK BORU KOL**  
ALUMINUM 40 PIPE HANDLE



**VASİSTAS MAKAS 150 MM**  
ARM FOR BOTTOM-HUNG 150 MM



**VASİSTAS MAKAS 250 MM**  
ARM FOR BOTTOM-HUNG 250 MM



**VASİSTAS MANDALI**  
TWIN CATCH



ALUMİNYUM TEKLİ RULMAN  
ALUMINUM SINGLE BEARING



ALUMİNYUM ÇİFTLİ RULMAN  
ALUMINUM DOUBLE BEARING



MAFSALI CEPHE KOLU  
FLEXIBLE FACADE ARM



30 LUK CEPHE MAKASI  
30 CURTAIN SCISSORS



45 LİK CEPHE MAKASI  
45 CURTAIN SCISSORS



50 LİK CEPHE MAKASI  
50 CURTAIN SCISSORS



60 LİK CEPHE MAKASI  
60 CURTAIN SCISSORS



71 LİK CEPHE MAKASI  
71 CURTAIN SCISSORS



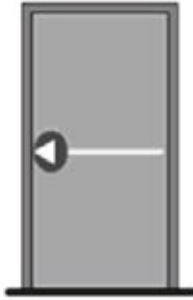
PARALEL CEPHE MAKASI  
PARALLEL FACADE SHEAR



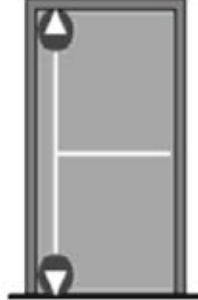


	TEK KANAT PANİK KAPI SETİ PANIC DOOR KIT FOR SINGLE VENT			ÇİFT KANAT PANİK KAPI SETİ PANIC DOOR KIT FOR DOUBLE VENT	
		2270 mm	3400 mm	2270 mm	3400 mm
MAX. YÜKSEKLİK MAXIMUM HEIGHT	-	2270 mm	3400 mm	2270 mm	3400 mm
HORIZONTAL BAR	573001	573001	573001	573001 (2 ADET)	573001 (2 ADET)
PANIC HANDLE	573002	573002	573002	573002 (2 ADET)	573002 (2 ADET)
VERTICAL LOCKING	-	573003	573003	573003	573003
VERTICAL BAR	-	573004	573004	573004	-
VERTICAL BAR	-	-	573006	-	573006

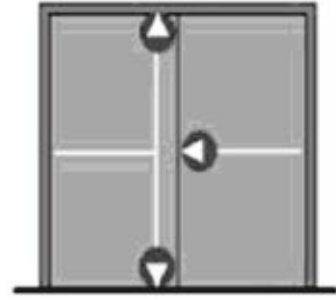
\*DIŞ MÜDAHALE KOLU SETE DAHİL DEĞİLDİR. MAKSİMUM KAPI ENİ 1300 MM'DİR  
\*EXTERNAL HANDLE ARE NOT INCLUDED IN KITS. MAXIMUM VENT WIDTH IS 1300 MM.



ONE POINT LOCKING



ÇİFT NOKTADAN KİLİTLEME  
DOUBLE POIN LOCKING



ÜÇ NOKTADAN KİLİTLEME  
THREE POINT LOCKING



**TİP-3 KAPI KAPATICI**  
TYPE-3 DOOR CLOSER



**TİP-4 KAPI KAPATICI**  
TYPE-4 DOOR CLOSER



**TİP-5 KAPI KAPATICI**  
TYPE-5 DOOR CLOSER



**TİP-4 KIZAKLI KAPI KAPATICI**  
TYPE-4 SLIDINGDOOR CLOSER



**ALÜMİNYUM KAPI HİDROLİK  
ALT MEKANİZMASI**  
Aluminum Door Hydraulic Sub Mechanism



**CAM KAPI HİDROLİK ALT  
MEKANİZMASI**  
Glass Door Hydraulic Lower Mechanism



**POLYAMİD TİJ**  
POLYAMIDE CONNECTION ROD



**POLYAMİD TİJ KESME-DELME  
MAKİNESİ (MANUEL)**  
POLYAMIDE ROD CUTTING AND DRILLING MACHINE



**POLYAMİD TİJ KESME-DELME  
MAKİNESİ (YARI OTOMATİK)**  
ROD CUTTING AND DRILLING MACHINE



80 LİK U CEPHE ANKRAJ  
80 U FACADE ANCHORAGE



100 LUK U CEPHE ANKRAJ  
100 U FACADE ANCHORAGE



120 LİK U CEPHE ANKRAJ  
120 U FACADE ANCHORAGE



150 LİK U CEPHE ANKRAJ  
150 U FACADE ANCHORAGE



200 LUK U CEPHE ANKRAJ  
200 U FACADE ANCHORAGE



80 LİK U CEPHE ANKRAJ  
80 U FACADE ANCHORAGE



100 LİK U CEPHE ANKRAJ  
100 U FACADE ANCHORAGE



150 LİK U CEPHE ANKRAJ  
150 U FACADE ANCHORAGE



200 LİK U CEPHE ANKRAJ  
200 U FACADE ANCHORAGE

